

# ***Arlington-Fairfax Chapter, Inc.***

**Izaak Walton League of America**

**14708 Mount Olive Road**

**Post Office Box 366 . Centreville, VA 20122-0366**



Volume 53, Number 3

## **NEWSLETTER**

May, June, July 2015

### **Chapter Elections**

Elections for your chapter officers and board of directors will be conducted in the month of July 2015 with the polls being open on the 4<sup>th</sup>, 5<sup>th</sup>, 11<sup>th</sup> and 12<sup>th</sup>. In accordance with the chapter by-laws, elections are held annually for half of the board positions with officials serving a two year term. The officers and board member positions open for election this year are:

President  
Secretary  
Membership  
Field Archery  
Rifle-Pistol  
Youth Activities  
Four (4) Directors-at Large



Nominations for these positions are currently being accepted from the chapter membership. Nominations will be closed at the monthly member meeting in June and the ballot finalized. If you would like to run for any of the open positions or submit a nomination, contact John Seaberg, 2015 Election Committee Chairman via email or in person.  
[John.Seaberg@arlingtonfairfax-iwla.org](mailto:John.Seaberg@arlingtonfairfax-iwla.org)



### **News From the Junior Chapter**

On March 19, 2015 at 7:05 pm, The IWLA Junior Chapter Officers met to discuss their goals and plans for the year.

The Chapter first agreed that the elections for the 2015-16 board will be held during the first week in August. Next, they discussed possible fundraisers to help raise money for the new Air Rifle Range.

They also decided on organizing a fundraiser match that will be held on July 25, 2015. It will be called the Wendell Thompson Memorial Match and will include 2-3 relays of 25 shooters and a 50/50 raffle to raise money for electronic rifle targets.

This will be an Approved NRA 60-shot International Air match open to any precision

shooters.

If you would like to register or would like a copy of the match program, please email [ginnythrasher@me.com](mailto:ginnythrasher@me.com). Spectators and volunteers welcome! Finally, the meeting was adjourned at 8:00 pm.



## Important contact information

### Chapter Officers

#### **President**

Ernie Padgett.....540-439-6085

#### **Vice President**

Tom Ciarula.....703-250-0947

#### **Secretary**

Pamela Meara.....703-362-7293

#### **Treasure**

Bob Crisman.....540-338-7316

#### **Membership Chairman**

Tom Tobey.....703-447-1131

### Chapter Directors

#### **Target Archery**

Leroy Anderson.....703-644-1560

#### **Director At Large**

Carl Armstrong.....703-830-5091

#### **Skeet & Trap**

Bob Brino.....703-368-4934

#### **Conservation**

John Seaberg.....703-830-9365

#### **Rifle & Pistol**

Ed Franzosa.....703-255-3088

#### **Director At Large**

Oscar Starz.....703-321-8626

#### **Director At Large**

Chuck Green.....703-753-4699

#### **Director At Large**

Dave Cunningham.....202-436-6410

#### **Director At Large**

Ben Crandall.....703-993-4503

#### **Education & Training**

Bucky Sills.....703-830-0458

#### **Field Archery**

Dick Riemer.....703-543-8585

#### **Youth Activities**

Tom Pike.....703-802-0740

#### **Director At Large**

Randy Hancock.....703-830-8539

#### **Director At Large**

Art Twichell.....703-960-6524

## Committee Chairpersons

**Adopt-A-Highway** / Jim Pont.....703-378-7176

**Advance Planning / your name here**.....**your phone #**

**Buildings and Grounds** / Bucky Sills.....703-830-0458

**Bull Run Muzzleloaders** / Tony Sucher.....703-354-2726

**Caretaker** / Rick Kohne.....571-334-5125

**Chapter Field House** / Ed Forsberg.....709-238-0231

**Conservation** / John Seaberg.....703-830-9365

**Education & Training** / Bucky Sills.....703-830-0458

**Field Archery** / Dick Riemer.....703-543-8585

**Historian / your name here**.....**your phone #**

**Junior Olympic Archery**/Mary LeCompte .....703-361-4565

Lani Young.....703-742-8142

**Legislation** / Michael Wenk.....703-998-6796

**Meeting Program** / Tom Ciarula.....703-250-0947

**Membership / Tom Tobey**.....703-447-1131

**Admin. assistants** / Linda Armstrong.....703-909-2708

Scott Aldrich.....571-213-2541

**Newsletter** / Daniel & Susie Subia.....571.244.3624

**Outdoor Ethics** / Jim Mills.....703-437-9133

**Pond Manager** / John Seaberg .....703-830-9365

**Program Outreach // your name here**.....**your phone #**

**Public Relations / your name here**.....**your phone #**

**Rifle-Pistol Range** / Ed Franzosa.....703-255-3088

**Scholarship** / Dave Dobbins.....703-753-0878

**Skeet & Trap Range** / Bob Brino.....703-368-4934

**Target Archery** / Leroy Anderson.....703-644-1560

Stan Hilliard.....703-430-4534

**Youth Activities** / Tom Pike.....703-802-0740

**Scouting Activities** / Tom Pike.....703-802-0740

### Chapter field house Office hours

**1st and 3rd Tues**.....**1:00pm to 9:00pm**

**All other Tues**.....**1:00pm to 4:00pm**

### Other times, call

Linda Armstrong.....703-909-2708

Scott Aldrich.....571-213-2541

### Chapter Board of Directors Meeting

1st Tuesday of each month

7:30 pm @ Field House

All members welcome

### Attend your chapter meetings

#### **Regular Membership Meeting**

3rd Tuesday of each month

7:30 pm @ Field house

## Field house phone numbers

Chapter Field house.....**703-631-4495**

Rifle & Pistol Field house....**703-631-4496**

Skeet & Trap Field house....**703-631-4497**

Field Archery Field house....**703-631-4498**

### **Chapter Presidents E mail**

epadgett@sprynet.com

### **Chapter Fax Number**

703-631-0968

### **Chapters Web-site**

www.arlingtonfairfax-iwla.org



# Colonel Birt Kidwell Winter Skeet and Trap

The 2015 season of the Winter Skeet and Trap League concluded on Sunday 12 April with the final standings once again being determined during the very last matches for both team and individual competition. The season began the 4<sup>th</sup> of January with a 13 week schedule, but was extended due to two cancellations for snow and ice conditions. Despite these obstacles, all 12 matches were completed.

In the Individual Competition, our High Overall Average winner was once again Jim Hickerson, who broke 551 of 600 targets equating to a combined average of 22.958. Alan Hickerson took the honors for high Skeet average with an impressive 23.417 hitting 281 of 300 targets. Right behind him for Skeet runner-up was Scott Stannard, who broke 278 targets. In Trap, the high average winner was Travis Rockwood, ending the season with an average of 23.250 hitting 278 of 300 targets. The runner-up for high trap was John Spicer, coming in with a 23.167 average. In the Most Improved Category, Brad Olson beat out several other contenders to capture the award with a combined average improvement from last season of 7.087 targets.

The team competition take place in two categories: one based on team points won in head to head matches each week against another team and the second based on cumulative team scores over the entire season. The top five teams in each category earned an award for all the team members, with no team permitted to receive an award in both. The competition was fierce with the winners being decided by tenths in the team scores and a three way tie for first place in team points.

In the Cumulative Team Score Category, Captain Brian Hickerson led his squad to a season score of 2,374.517 to lock down the 1<sup>st</sup> place award. Joining Brian were Team 17 members Alan Hickerson, Ben Hickerson, Glenn Hickerson, Jim Hickerson, and Marcelo LaBarca. Team 14 landed in the 2<sup>nd</sup> place slot with a score of 2,354.519 led by Captain Scott Stannard and members John

Bumgarner, Steve Geraci, Bob Ponier, Jimmy Racine, and Mike Whitmore. Third place was won by Team 13 with a score of 2,348.708 and members Ron Gazda, Captain Bob Nolan, Howard Hall, Marc Lenzen, Mike Oliva, and Don Shope. Team 1 captured 4<sup>th</sup> Place coming in with a score of 2,348.406 and members Benn Crandall, Warren Guillett, Garrett Miller, Jeff Miller, Kevin Miller, and Captain Dave Wabeke. The 5<sup>th</sup> place finisher was Team 3 with a 2,348.308 and members Captain Randolph Williams, Bill Donnelly, Rob Ellis, Bob Hohman, Tom Horio, and Greg Wilcox.

We ended the season with a three way tie for 1<sup>st</sup> place in the Team Points competition with the final standings being determined by their combined team averages. Team Number 6, Captained by Mike Logwood, topped the list in 1<sup>st</sup> place with 26.0 points. Joining Mike were Dave Carlson, John Green, John Hunter, John Seaberg and John Skuchko. Steve Canale's Team 7 took the 2<sup>nd</sup> place honors also with 26.0 points consisting of Tom Delewski, Carl Josefson, Ashly Palles, Mel Stahl and Tim Tynan. Team 26 also with 26.0 points captured 3<sup>rd</sup> place with members Captain Mel Keener, Bryan Conaway, Sherrill Hebert, Peter Hoene, Bill Johnson, and Skip Strand. Fourth place went to Team 5 with 25.0 points and members Karl Higgins, Ed Janik, Travis Rockwood, Steve Sarigianis, Stu Wood and Captain Storm Rhode. Taking Fifth Place award was Team 4 with 22.5 points and members Captain Dan Gillespie, Ian Gillespie, Tom Anhalt, Scott Cragg, Joe Furtek, and Andrew Kuhlman.

Congratulations to all of our individual awardees for their consistent performance and excellent marksmanship. The awards for all the winners will be presented at the annual Chapter Picnic in July, so plan to come out, congratulate all the shooters, and eat some great food prepared by our own Bucky Sills, and his BBQ cooking crew. Special thanks to Pete Bills for keeping facilities in good order and the hamburgers stocked each weekend, and to Hank Waters for his web site work. Bob Brino, Director of Trap and Skeet, also deserves a thank you from all the league members for his gracious hospitality, wiliness to let us use the range all winter, and working in the cold to keep the equipment operating. The 2016 season will be here before we know it on 3 January.

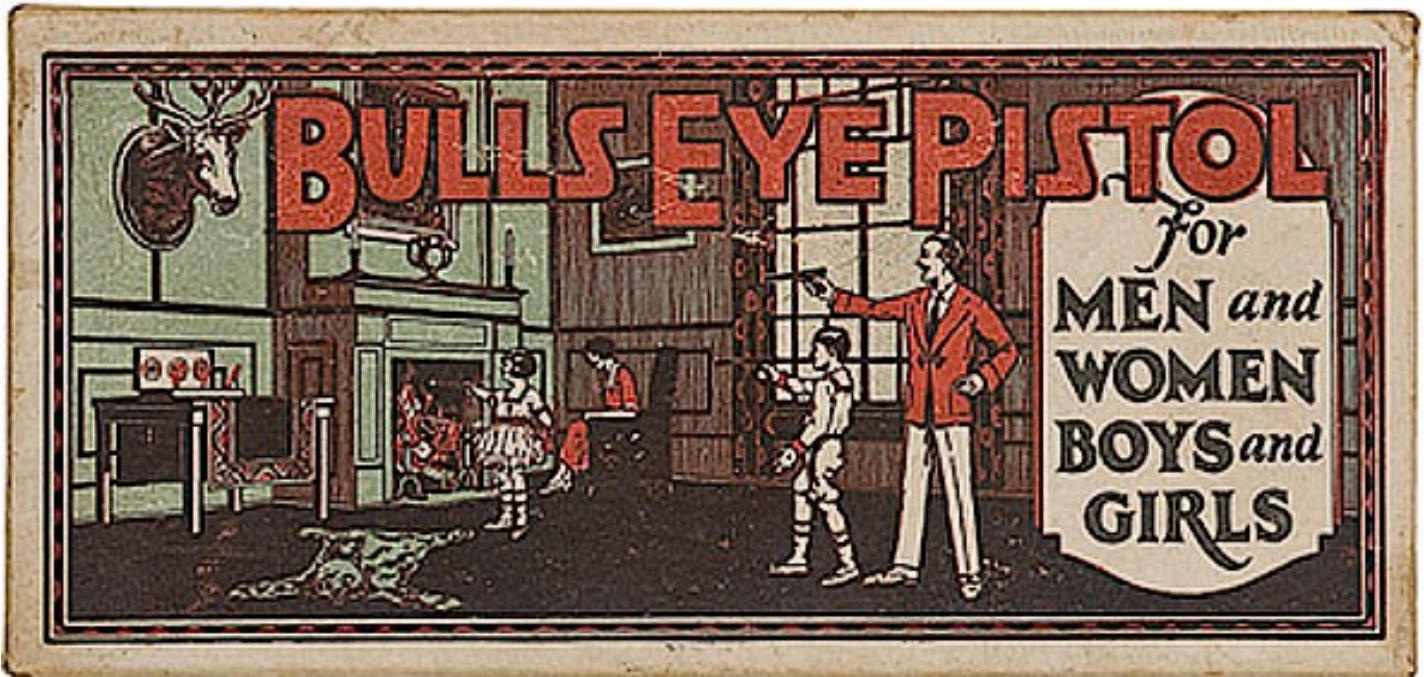
# Bullseye Pistol League

## IWLA-Monthly Rimfire Bullseye Match: May – October 2015

The Rimfire Bullseye Match begins May 3<sup>rd</sup> and will continue through October. This year we will conduct three relays with 17 shooting positions per relay. Interest in the Bullseye

participants are willing to share their knowledge and experience.

The shooting match consists of a total of 60 shots at slow, timed and rapid fire. The May through October match requires the participants to use rimfire pistols or revolvers. If you need advice



matches has grown considerably. The 51 lane positions are available for this season.

The match is held on the first Sunday of each month. Beginners through experts are invited to compete in the Bullseye Pistol Match in either the first relay at 8:30 am, the second at 9:30 am and the last relay at 10:30 am. Please arrive 15 minutes before the relay to prepare your target frame. The match is held at the IWLA rifle/pistol range. All ages and talent levels are invited to compete.

Because we shoot in a relaxed atmosphere, the matches are both fun and educational. If you are a beginner and are interested, please join us. If you are the parent of a young adult and would like them to learn the correct basics of pistol shooting and competition, they are also welcome. Many of the

on the type of pistol or revolver needed, contact Jack at the email listed below. Targets are provided for all matches. Bring your pistol/revolver, ammunition and lots of enthusiasm. See you on the first Sunday of each month.

This is a great opportunity to learn the basics and improve your skills. If you are not on the email list and are interested in the event or have additional question contact Jack Macheby by email: [red-dot-bull@verizon.net](mailto:red-dot-bull@verizon.net). Please join us for an enjoyable Sunday morning event! If you are seeking information about Bullseye shooting, visit this great website [www.bullseyepistol.com](http://www.bullseyepistol.com).

## Rifle and Pistol News

### **ALERT: 2015 World Police & Fire Games from June 27 to July 2**

Our chapter is co-hosting Air Rifle and Skeet & Trap matches from June 27<sup>th</sup> to July 2<sup>nd</sup> with the Fairfax County authorities. During this time members can expect that parking everywhere on the chapter property will be difficult.

The Rifle-Pistol Range will be open for normal operations during these days, however, chapter members can expect that access to the property and parking will be impacted. Fairfax County expects to operate buses for the Fire & Police Game participants to come to the property for practice and actual matches. Plan your range use accordingly.

**SAFETY: Eye Protection Required at ALL Times on Firing Line When Range is Live**

**Shooters and EVERYONE else who are on the firing line when the Rifle-Pistol Range is live or hot are required to wear eye protection.** This does not mean wearing your sunglasses on top of your head! This does not mean that your eye protection sits on the shooting bench because the eye protection is inconvenient or unfashionable or distracting.

We have noticed that members and guests are frequently NOT wearing eye protection when the firing line is live. Our range officers will warn people to wear their glasses or other eye protection, but if people persist in not wearing eye protection **we will force them to leave the range!** The range officer on duty announces that ear and eye protection is required for all persons on the firing line every half hour. That is more than 6500 times every year. This safety measure must be followed. Your eyes can be easily damaged if a spark of burning powder or a flying piece of brass or bullet fragment hits your eye. No exceptions!

**SPEEDING: Chapter Speed Limit is 10 MPH**

We have noticed that many drivers are driving faster than 10 mph on the chapter roads. Pedestrian safety is the principal reason for the 10 mph speed limit. Adults and children walk on the chapter roads and they have the right-of-way at all times. Driving faster than 10 mph raises dust clouds that can hurt people with dust allergies and the dust floats over the firing line and can damage some firearms.

There is no excuse for members and their guests driving fast enough to raise dust clouds that coat firearms and fill our rangehouses and other facilities with a layer of dust everywhere. **Slow down, you will still get there!**

**Steel Jacketed Projectiles: Which ammunition is suitable for use at the Rifle-Pistol Range?**

The recent ammunition shortage has many shooters scrambling to find ammunition to shoot at the Rifle-Pistol Range. A number of members have asked whether ammunition with steel jacketed projectiles is suitable or safe for use at the chapter's Rifle-Pistol Range. The answer is a bit complicated. Most steel jacketed ammunition is actually military surplus ammunition. In the US and western European countries most military small arms ammunition must conform to the Geneva Conventions. Regular pistol and rifle ammunition must be lead cores with a gilding metal (an alloy of copper and zinc) jacket fully covering the core. This is called "Full Metal Jacket" (FMJ) ammunition. In many Eastern European and some Asian countries gilding metal is too expensive for ordinary FMJ or "Ball" ammunition (ball is an old military term from the 1700s when smooth bore black powder muskets fired a round ball of lead as the standard ammunition of the day). A cheaper way to make FMJ or ball ammunition is to use soft steel in place of the gilding metal and coat the steel jacket with a "wash" or a very thin layer of copper to lubricate the projectile (bullet) as it passes down the barrel. Soft steel is very cheap compared to copper.

This brings us to the second complication of steel jacketed projectiles. The military has a need for armor piercing (AP) or metal piercing ammunition. Traditional western military procedures call for a

## Rifle and Pistol News (con't)

hardened steel core or tungsten alloy core inside a moderate amount of lead inside a full metal jacket of gilding metal. This traditional method was used from WW II to the present day. The hardened steel core or tungsten alloy core would give excellent metal piercing qualities but making this type of ammunition was and is an expensive process. There are several cheaper ways to make AP ammunition. One way is to make a thicker and harder steel jacket around the all-lead core. A number of countries prefer this method as the process can use some of the materials and machinery used to make steel jacketed ball (FMJ) ammunition. Both kinds of steel jacketed ammunition are often sold as surplus ammunition. Often the seller does not know the specific degree of hardness of the ammunition (the extent to which it is armor piercing). Armor piercing ammo will do a lot of damage to the baffles and the target frames on the Rifle-Pistol Range.

The first problem for a chapter member or a guest shooting at the range is to identify the type of ammunition they are planning to fire. Visual inspection is not sufficient to identify gilding metal jackets from copper washed steel jackets. The simple solution is to test the projectile with a magnet. **NOTE: this refers to the PROJECTILE not the case!** Quite a bit of military ammunition and **some commercial** ammunition is made with steel cases instead of brass cases. Since the case does not fly down range at 2000 or more feet-per-second, steel cased ammunition is not the problem.

To repeat: **test the projectile with a magnet!** If a magnet sticks to the projectile then **DO NOT FIRE** that ammunition at the chapter's Rifle-Pistol Range. Steel jacketed projectiles are not allowed on the Rifle-Pistol Range. Steel cased ammunition is allowed.

**So, what do you need to do?** There is a magnet hanging next to the entrance of the covered firing line at the range. Use that magnet to test your ammunition. **If your pro-**

**jectiles ("bullets") stick to the magnet do not shoot that ammunition at our range.** When in doubt, do not use the ammo at the Rifle-Pistol Range.

If you shoot steel jacketed ammunition at the range we will require you to leave the range and I (the Chief Range Officer) may bring your case to the Board of Directors for further action. Steel jacketed projectiles will greatly damage the baffles on the Rifle-Pistol Range. We spend large amounts of money and a great deal of time to keep the baffles in good order. There is no reason, nor any excuse, for anyone to shoot steel jacketed ammunition at the range. The ammunition shortages are not sufficient justification for shooting ammunition that is so destructive of the range facilities.

### Guests at the Rifle-Pistol Range

There is some unnecessary confusion about bringing guests to the Rifle-Pistol Range. This is covered in detail at the new member orientation. **Remember, members with Temporary Range Badges are not allowed to bring guests to the Rifle-Pistol Range.** We also strongly suggest that you visit the range several times prior to bringing guests. You need to know, and understand, how the range functions so that you can properly supervise your guests.

You may want to think twice before bringing a first-time handgun shooter to our range. Asking the first-time handgun shooter to shoot at a target 25 yards away is a good way to make that first shooting experience much less than a good memory.

From the Rifle-Pistol Range Rules:

**Range Qualified Chapter members are authorized to bring guests to the Rifle-Pistol Range.** This does not mean that your son who is NOT a chapter member can bring his buddies to the range for an afternoon of shooting fun. This also means that your son should not take your range badge and bring his buddies to the range. Yes, it happens!

**However, no guest will be allowed on the range**

## Rifle and Pistol News (con't)

**unless accompanied and supervised by a Range Qualified Chapter member.** This means that if you (the chapter member) bring two guests with you, you are NOT getting two or three shooting positions. **Since you have to supervise your guests you CANNOT shoot when they are shooting.** You get one shooting position. You put only one firearm down on the position table at the firing line. You put only ammunition for that firearm on the table at the firing line. One person (you or a guest) shoots the firearm at a time. **YOU MUST MAINTAIN COMPLETE CONTROL OVER THE ACTIVITIES OF YOU AND YOUR GUESTS AT ALL TIMES.**

**Remember: One Badge, One Bench, One Gun.**

**Members are responsible for the conduct and actions of their guests.** If your guest is shooting in an unsafe manner the duty Range Officer will tell you to correct the unsafe action(s). If you ignore this or if the unsafe shooting action(s) continue you and your guests will be required to leave the range. We cannot and will not accept unsafe shooting practices by members or their guests.

**The number of times that any one guest may be allowed to use the range is subject to the Chapter rule (three times in one year.)** So you cannot bring your neighbor or co-worker to the range every weekend. This rule was created when some members would split a membership fee between themselves and a friend or two. And the member brought the other guys out as many times as they wanted. If the guest likes our chapter he needs to join the chapter and pay for his fair share of the costs of running our chapter!

**Members may bring dependents and spouses to the range without regard to this limit on the number of uses, but the member must remain in close proximity and immediate supervision of such family members at all times and members are**

**responsible for the conduct and actions of their family members.** The chapter member must have immediate supervision over family members at all times. You cannot supervise your child if you are shooting at another bench. We have seen instances where the adult parks the kid and a firearm on a firing line table along with a box of ammunition. Then the adult goes to another table to get some "real" shooting done. (Now occasionally the kid shoots better than the adult and the kid should be supervising daddy's shooting!) To keep the range safe for all participants and to prevent accidents that could lead to the county shutting down the range we must make the chapter member supervise his/her family members.

**Help Keep the Range Safe and Clean Up After You Shoot**

While most shooters at the Rifle-Pistol Range are getting better at picking up their brass after shoot-



ing, we still have a trash and other problems on the firing line. The range recycles spent brass cartridge cases and aluminum soda cans to make some money to help out with range operations. We must remove steel and aluminum cases from the recycling bucket to keep our metal "load" from rejected at the metal recycling company. We expect each shooter to pick up all their cases after shooting. **This includes all rimfire brass!** And we expect you to pick up the steel and aluminum cased cartridges and place them in the trash barrels too. We do not want the lawn mower throwing spent cases at someone or through the glass doors. **It is not**

**sufficient for you to sweep the fired cases onto the gravel strip or the grass.** Do your part by putting the brass in the recycling boxes and the aluminum cans in the aluminum can bin after you have crushed the can. Both recycling containers are located at the entrance to the firing line.

Another trash problem is broken clay pigeons left on the range floor. The clay pigeons and spent fragments on the back berm can be left in place BUT if you are shooting at clay pigeons that were mounted on the target frames at 25, 50, or 75 yards, you must pick up the busted clay pigeon remains. Do not leave broken clay pigeons where we are mowing the grass. In the past, other shooters have come along and seen the orange remains on the range floor and used them as targets! It should also be obvious that you can **NOT** throw clay pigeons out onto the range floor and then shoot at them. This practice is totally forbidden as it can lead to ricocheting projectile that could leave the range. **THE RANGE FLOOR IS NOT A TARGET AREA!**

We are finding way too many candy wrappers, plastic sandwich bags, shotgun hulls, cloth cleaning patches, and other trash under the shooting benches, behind the firing line, and in the parking lot. **If you throw the stuff on the ground it is up to YOU to pick up the mess and put it in the trash barrels on the firing line.** The firing line should not be used as a trash bucket. Please respect others and place cigarette and cigar butts in the smoking urns provided.

The duty range officers are not there to pick up and clean up after you or your guests. Contrary to urban myth, the range does not employ anyone to clean up your mess or repair your damage. The range officers are chapter members who pay their dues like you and volunteer their time and labor to keep the range operating. **Without the Range Officers giving their time and work there would be NO RANGE for you to shoot at! You should thank the duty range officer for the EXTRA effort he makes**

**to keep the chapter range running.** So police up everything you are leaving behind before you leave the range and make the range a better place than you found it!.

### Ask Questions When in Doubt



If you are new to the Rifle-Pistol Range or have forgotten our procedures **ASK** the duty Range Officer. If you have never shot on our range and don't know where the targets are stored, or don't know how to position the paper targets on the target frames **ASK** the duty Range Officer. If you have a new firearm, especially if you have a handgun that you have never fired before, start your shooting of that firearm by sitting at a bench to find out where the bullets are hitting relative to the sights. Too many people start shooting a new gun while standing before they have adjusted their aim to match the bullet impact. This leads to bullets hitting the target frames, or hitting the baffles, or hitting the range floor and ricocheting out of the range completely. Hitting the frames or the baffles costs time and money to repair. Rounds leaving the range can lead to an accident that could close the range forever.

**To shoot you must have a white Range Qualification Badge that shows you are a current (2015) member! 2014 range badge stickers are no long valid!**

Dr Ed, CRO



# THANK YOU FOR YOUR SUPPORT!

Izaak Walton Arlington-Fairfax Chapter  
P.O Box 366  
Centreville, VA 20122

Dear Arlington-Fairfax Chapter:

Thank you for your support during my 2015 Girl Scout cookie season. Because of your generous donation I was able to donate 350 boxes of cookies to the brave men and women serving our great nation. All cookies, (including 172 boxes from my troop and cookie booths made our total donation 522 boxes) were delivered to the USO-Washington at Fort Belvoir on Sunday, April 12, 2015.

The generous support and donations from wonderful organizations like you, the Izaak Walton Arlington-Fairfax Chapter have made it possible for me to make a difference in the life of our American heroes. By being able to support our military it is evident that I am able to change the world one cookie at a time.

Your support not only helped out service men and women but also helped fund and operate the local Girl Scout camps which are dependent of the sales of Girl Scout cookies.

Thank you so very much!

Sincerely,

Mary Subia  
Troop 4912



## Archery News

### Up Coming Cub Run Shoots

#### **AFRICAN SAFARI SHOOT: Sunday JUNE**

**28th** Twenty eight 2-D safari animal targets throughout our wooded archery range. Come on out, have some fun, bring the whole family. Sandwiches and snacks will be sold from our snack bar throughout the event. Registration 9:00am till 1:00pm.

#### **BUCKBUSTER 3-D SHOOT: Sunday SEPTEMBER 20th**

#### **ARCHERY UPDATE**

Cub Run Archers would like to extend a warm welcome and an invitation to all members of the IWLA to take advantage of the many facilities, training opportunities, archery equipment, events and great camaraderie that our club has to offer. Our state of the art indoor range is available for your use anytime a qualified Range Officer is on site. It is common knowledge that a good many regulars in the club are at the range house every morning from approximately 9:30 am until noon. This is a great time to come down and introduce yourself and find out what Cub Run Archers is all about. If you are new to archery and need advice on anything from bow setup, arrow tuning to shooting technique, not only will you find literally, several hundred years of collective experience, but the equipment to perform those tasks. We especially would like to encourage youth participation and have a great many youth bows that young shooters may practice with to develop their skills. The cost to join Cub Run Archers is only \$15 per year, per family. Though you don't need to be a member of Cub Run Archers to use the facilities, we have a monthly newsletter and several dinners and picnics throughout the year and attendance at even one of these would easily be worth the annual membership. If you are interested, please contact Robert D'Imperio, Secretary, Cub Run Archers, 13490 Edge Rock Ct. Chantilly, VA 20151. You may email Bob at [robbyrayd@yahoo.com](mailto:robbyrayd@yahoo.com) as well.

The outdoor facilities are available to any

member in good standing of the IWLA. We have practice range with target butts at 5, 10, 15, 20, 30, 40, 50, and 60 yards. These are lighted as well if you would like to shoot in the evenings. There is also a crossbow station with a movable bag target for field point shooting and a broadhead target for shooting broadheads into. **Remember**, crossbows are allowed **ONLY** at the special crossbow station and not at any of the other targets or ranges. A 28 point field archery course is also available for use to all IWLA members. Daytime use only as there is no lighting on the field course.

#### **Archery 101 Class**

On Sunday, May 17<sup>th</sup> Cub Run Archers will be hosting a beginner's 101 archery class. The class will take place in the indoor archery range starting at 1:00pm till 4:00pm. The class is for those who have never shot archery before or have very little knowledge in the sport of archery and would like to see what our sport is all about. The class will cover the different types of archery equipment, safety, purchasing of bows, and shooting. We have the bows and arrows.....all you need to do is show up. For IWLA members the class is \$20.00 for adults and \$10.00 for children with a max of \$30.00 per IWLA family. Non IWLA members the class is \$25.00 per adult and \$15.00 for children with a family max of \$40.00. Class fees will be collected before the start of the class beginning at 12:45pm. To register for the class please email Dick Riemer, [rriemer@cox.net](mailto:rriemer@cox.net) or by phone 703-543-8585. For children's registration please include their age. The class will be limited to 35, do not wait too long to register, our classes do fill up.

#### **Fairfax County Park Archery Qualifying**

Archery qualifying for the FY15/16 Fairfax County Park Archery Program will be July 6<sup>th</sup> through August 23<sup>rd</sup>. Qualifying will be held each Thursday evening 6:30pm till dark and Sunday mornings 9:00am till noon at the Field Archery Range. To qualify you must shoot with your hunting broadheads, three arrows in a row in a seven inch circle at 25 yards. For crossbows you must shoot free hand. The cost will be \$5.00 per each attempt to qualify. You are allowed up to three attempts at qualifying.

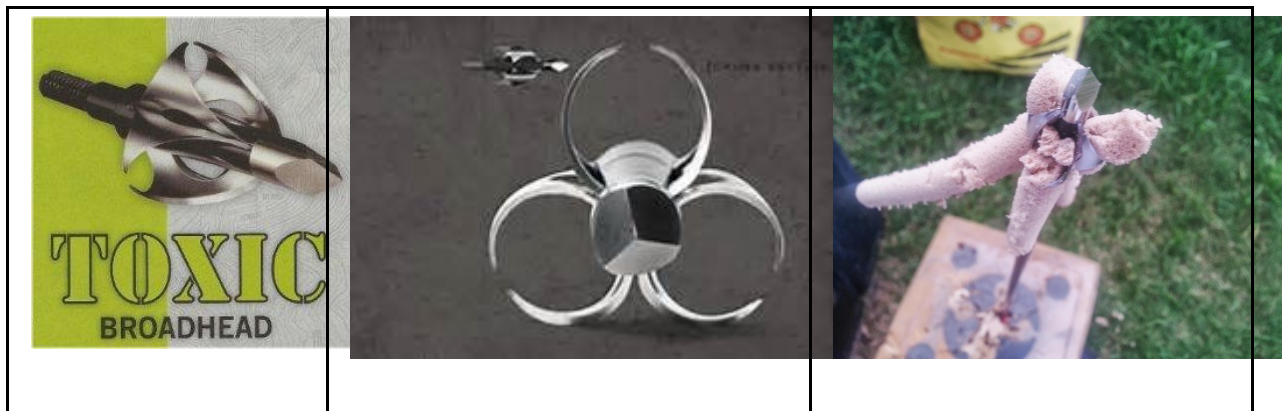
## **Core Drilling Broadheads Are Not To Be Shot On The Field Archery Ranges At Any Time.**

Core drilling broadheads like the Toxic and the Cyclone and any others that may appear on the market for hunting purposes may not be shot at any target butts at the field archery range. While this broadhead may prove to be highly effective for hunting, it is not to be used on the Field Archery Range due to the damage it inflicts on target butts.

A local archery shop reported after approximately 25 shots with this broadhead, a brand new target butt was rendered useless. These targets cost upwards of \$150 each. There is no way IWLA can afford to replace target butts that normally last months to a year on a daily or weekly basis, to support the use of this broadhead.

This restriction is being implemented to protect the facilities property and maintain a safe and functional facility for all members to enjoy.

Below are some pictures to clarify the specific broadheads in question.



As you can see in the third picture these broadheads do massive damage to targets with each shot.

## VOLUNTEERS NEEDED



**June 27<sup>th</sup> – July 3<sup>rd</sup> 2015**

*To volunteer, send an e-mail to Benn Crandall  
at [benn0825@aol.com](mailto:benn0825@aol.com)*

### **Membership NOTICE: TRAP & SKEET**

During the WPFG event, the Trap & Skeet Range will be closed from June 28<sup>th</sup> thru July 2nd

### **Membership NOTICE: AIR RIFLE**

During the WPFG event, the Air Rifle Range will be closed from June 29<sup>th</sup> thru July 1st

# May 2015

## Arlington - Fairfax IWLA Calendar

Monday	Tuesday	Wednesday	Thursday	Friday	Saturday	Sunday																																																																																				
<div> <div> <div>Apr 2015</div> <table> <tr><td>M</td><td>T</td><td>W</td><td>T</td><td>F</td><td>S</td><td>S</td></tr> <tr><td></td><td>1</td><td>2</td><td>3</td><td>4</td><td>5</td><td></td></tr> <tr><td>6</td><td>7</td><td>8</td><td>9</td><td>10</td><td>11</td><td>12</td></tr> <tr><td>13</td><td>14</td><td>15</td><td>16</td><td>17</td><td>18</td><td>19</td></tr> <tr><td>20</td><td>21</td><td>22</td><td>23</td><td>24</td><td>25</td><td>26</td></tr> <tr><td>27</td><td>28</td><td>29</td><td>30</td><td></td><td></td><td></td></tr> </table> </div> <div> <div>Jun 2015</div> <table> <tr><td>M</td><td>T</td><td>W</td><td>T</td><td>F</td><td>S</td><td>S</td></tr> <tr><td>1</td><td>2</td><td>3</td><td>4</td><td>5</td><td>6</td><td>7</td></tr> <tr><td>8</td><td>9</td><td>10</td><td>11</td><td>12</td><td>13</td><td>14</td></tr> <tr><td>15</td><td>16</td><td>17</td><td>18</td><td>19</td><td>20</td><td>21</td></tr> <tr><td>22</td><td>23</td><td>24</td><td>25</td><td>26</td><td>27</td><td>28</td></tr> <tr><td>29</td><td>30</td><td></td><td></td><td></td><td></td><td></td></tr> </table> </div> </div>				M	T	W	T	F	S	S		1	2	3	4	5		6	7	8	9	10	11	12	13	14	15	16	17	18	19	20	21	22	23	24	25	26	27	28	29	30				M	T	W	T	F	S	S	1	2	3	4	5	6	7	8	9	10	11	12	13	14	15	16	17	18	19	20	21	22	23	24	25	26	27	28	29	30						<b>1</b> 5-7PM Junior Smallbore (RP)  5-9 PM Open Air Rifle (AR)	<b>2</b> 2-4PM AIM Shotgun (ST)  7-Noon Lake Braddock Air Rifle (AR)  <b>Handicap Picnic</b>	<b>3</b> 8:00 AM Bullseye Match (RP)  11:00 AM CRA Meeting (FA)  1-8 PM DIA Rod and Gun Club (FH, ST)
M	T	W	T	F	S	S																																																																																				
	1	2	3	4	5																																																																																					
6	7	8	9	10	11	12																																																																																				
13	14	15	16	17	18	19																																																																																				
20	21	22	23	24	25	26																																																																																				
27	28	29	30																																																																																							
M	T	W	T	F	S	S																																																																																				
1	2	3	4	5	6	7																																																																																				
8	9	10	11	12	13	14																																																																																				
15	16	17	18	19	20	21																																																																																				
22	23	24	25	26	27	28																																																																																				
29	30																																																																																									
<b>4</b> 5-9PM Beginning Air Rifle (AR)  7-9PM Troop 1137 (FH)	<b>5</b> 3-9PM West Springfield (AR)  <b>7:30PM Board Meeting (FH)</b>	<b>6</b> 3-7PM Robinson (AR)	<b>7</b> 3-7PM Woodson (AR)	<b>8</b> 5-7PM Junior Smallbore (RP)  5-9 PM Open Air Rifle (AR)	<b>9</b> 2-4PM AIM Shotgun (ST)  7-Noon Lake Braddock Air Rifle (AR)  <b>Women On Target</b>	<b>10</b> <b>Mother's Day</b>																																																																																				
<b>11</b> 5-9PM Beginning Air Rifle (AR)  7-9PM Troop 1137 (FH)	<b>12</b> 3-9PM West Springfield (AR)	<b>13</b> 3-7PM Robinson (AR)	<b>14</b> 3-7PM Woodson (AR)  4PM Service Rifle (RP)	<b>15</b> 5-7PM Junior Smallbore (RP)  5-9 PM Open Air Rifle (AR)	<b>16</b> 2-4PM AIM Shotgun (ST) 7-Noon Lake Braddock Air Rifle (AR)  8-7PM NRA Pistol (FH, 5-7PM RP)  <b>Armed Forces Day</b>  <div>8AM Troop 158 (Camp 1, 2 &amp; 3, SP) noon</div>	<b>17</b> 12-7PM PHRL Picnic (LP)  8AM-Noon Bull Run Muzzleloaders (RP)																																																																																				
<b>18</b> 5-9PM Beginning Air Rifle (AR)  6-10PM Suburban Whitetail Board (FA)  7-9PM Troop 1137 (FH)	<b>19</b> 3-9PM West Springfield (AR)  <b>7:30PM Membership Meeting (FH)</b>	<b>20</b> 3-7PM Robinson (AR)	<b>21</b> 3-7PM Woodson (AR)	<b>22</b> 5-7PM Junior Smallbore (RP)  5-9 PM Open Air Rifle (AR)	<b>23</b> 2-4PM AIM Shotgun (ST)  7-Noon Lake Braddock Air Rifle (AR)  <b>8-noon New Member Orientation (FH)</b>  <div>May Flowers Skeet Tournament (ST)</div> <div>5 PM Venture Crew 10 (Camp 1, 2, &amp; 3, SP) noon</div>	<b>24</b>																																																																																				
<b>25</b> 5-9PM Beginning Air Rifle (AR)  7-9PM Troop 1137 (FH)  <b>Memorial Day (Observed)</b>	<b>26</b> 3-9PM West Springfield (AR)	<b>27</b> 3-7PM Robinson (AR)	<b>28</b> 3-7PM Woodson (AR)	<b>29</b> 5-7PM Junior Smallbore (RP)  5-9 PM Open Air Rifle (AR)	<b>30</b> 2-4PM AIM Shotgun (ST)  7-Noon Lake Braddock Air Rifle (AR)  8-7PM Personal Protection Inside the Home (FH, 5-7PM RP)	<b>31</b>																																																																																				

= Athletic Field, AR= Air rifle, Camp= Camp sites, FA=Field Archery, FH=Field house, LP=Large picnic, RP=Rifle/Pistol, SP=Small picnic, ST=Skeet/Trap, TA= Target Arche

# June 2015

## Arlington - Fairfax IWLA Calendar

Monday	Tuesday	Wednesday	Thursday	Friday	Saturday	Sunday																																																																																				
<div>1</div> <div>5-9PM Begining Air Rifle (AR)</div> <div>7-9PM Troop 1137 (FH)</div>	<div>2</div> <div>8PMAdvance Air Rifle (AR)</div> <div>7:30PM Board Meeting (FH)</div>	<div>3</div> <div>3-7PM Robinson (AR)</div>	<div>4</div> <div>3-7PM Woodson (AR)</div>	<div>5</div> <div>5-7PM Junior Smallbore (RP)</div> <div>5-9 PM Open Air Rifle (AR)</div>	<div>6</div> <div>2-4PM AIM Shotgun (ST)</div> <div>7-Noon Lake Braddock Air Rifle (AR)</div> <div>8-6PM NRA RSO (FH)</div> <div>Suburban Whitetail Qualification (FA)</div>	<div>7</div> <div>8:00 AM Bullseye Match (RP)</div> <div>11:00 AM CRA Meeting (FA)</div>																																																																																				
<div>8</div> <div>5-9PM Begining Air Rifle (AR)</div> <div>7-9PM Troop 1137 (FH)</div>	<div>9</div> <div>8PMAdvance Air Rifle (AR)</div>	<div>10</div> <div>3-7PM Robinson (AR)</div>	<div>11</div> <div>3-7PM Woodson (AR)</div> <div>4PM Service Rifle (RP)</div>	<div>12</div> <div>5-7PM Junior Smallbore (RP)</div> <div>5-9 PM Open Air Rifle (AR)</div>	<div>13</div> <div>2-4PM AIM Shotgun (ST)</div> <div>7-Noon Lake Braddock Air Rifle (AR)</div> <div>Crushing Clays</div>	<div>14</div> <div>Flag Day</div>																																																																																				
<div>15</div> <div>5-9PM Begining Air Rifle (AR)</div> <div>7-9PM Troop 1137 (FH)</div>	<div>16</div> <div>8PMAdvance Air Rifle (AR)</div> <div>7:30PM Membership Meeting (FH)</div>	<div>17</div> <div>3-7PM Robinson (AR)</div>	<div>18</div> <div>3-7PM Woodson (AR)</div>	<div>19</div> <div>5-7PM Junior Smallbore (RP)</div> <div>5-9 PM Open Air Rifle (AR)</div> <div>5 PM Cub Scout Campout (Camp 1 &amp; 2 SP) noon</div>	<div>20</div> <div>2-4PM AIM Shotgun (ST)</div> <div>4-9PM Cub Sc (LP)</div> <div>7-Noon Lake Braddock Air Rifle (AR)</div>	<div>21</div> <div>8-6PM NRA Refuse to be a Victim (FH)</div> <div>8AM-Noon Bull Run Muzzleloaders (RP)</div> <div>Father's Day</div>																																																																																				
<div>22</div> <div>5-9PM Begining Air Rifle (AR)</div> <div>6-10PM Suburban Whitetail Board (FA)</div> <div>7-9PM Troop 1137 (FH)</div>	<div>23</div> <div>8PMAdvance Air Rifle (AR)</div> <div>6-9PM PPOTH Equipment Check (FH)</div>	<div>24</div> <div>3-7PM Robinson (AR)</div>	<div>25</div> <div>3-7PM Woodson (AR)</div>	<div>26</div> <div>5-7PM Junior Smallbore (RP)</div> <div>5-9 PM Open Air Rifle (AR)</div> <div>7-9PM Personal Protection Outside the Home (FH 8-5PM RP 5-7PM)</div>	<div>27</div> <div>2-4PM AIM Shotgun (ST)</div> <div>7-Noon Lake Braddock Air Rifle (AR)</div>	<div>28</div> <div>Safari Shoot (FA)</div>																																																																																				
<div>29</div> <div>5-9PM Begining Air Rifle (AR)</div> <div>7-9PM Troop 1137 (FH)</div> <div>Police and Police and</div>	<div>30</div> <div>8PMAdvance Air Rifle (AR)</div>	<div>May 2015</div> <table><tr><th>M</th><th>T</th><th>W</th><th>T</th><th>F</th><th>S</th><th>S</th></tr><tr><td></td><td></td><td></td><td></td><td>1</td><td>2</td><td>3</td></tr><tr><td>4</td><td>5</td><td>6</td><td>7</td><td>8</td><td>9</td><td>10</td></tr><tr><td>11</td><td>12</td><td>13</td><td>14</td><td>15</td><td>16</td><td>17</td></tr><tr><td>18</td><td>19</td><td>20</td><td>21</td><td>22</td><td>23</td><td>24</td></tr><tr><td>25</td><td>26</td><td>27</td><td>28</td><td>29</td><td>30</td><td>31</td></tr></table> <div>Jul 2015</div> <table><tr><th>M</th><th>T</th><th>W</th><th>T</th><th>F</th><th>S</th><th>S</th></tr><tr><td></td><td></td><td></td><td></td><td></td><td>1</td><td>2</td></tr><tr><td>6</td><td>7</td><td>8</td><td>9</td><td>10</td><td>11</td><td>12</td></tr><tr><td>13</td><td>14</td><td>15</td><td>16</td><td>17</td><td>18</td><td>19</td></tr><tr><td>20</td><td>21</td><td>22</td><td>23</td><td>24</td><td>25</td><td>26</td></tr><tr><td>27</td><td>28</td><td>29</td><td>30</td><td>31</td><td></td><td></td></tr></table>					M	T	W	T	F	S	S					1	2	3	4	5	6	7	8	9	10	11	12	13	14	15	16	17	18	19	20	21	22	23	24	25	26	27	28	29	30	31	M	T	W	T	F	S	S						1	2	6	7	8	9	10	11	12	13	14	15	16	17	18	19	20	21	22	23	24	25	26	27	28	29	30	31		
M	T	W	T	F	S	S																																																																																				
				1	2	3																																																																																				
4	5	6	7	8	9	10																																																																																				
11	12	13	14	15	16	17																																																																																				
18	19	20	21	22	23	24																																																																																				
25	26	27	28	29	30	31																																																																																				
M	T	W	T	F	S	S																																																																																				
					1	2																																																																																				
6	7	8	9	10	11	12																																																																																				
13	14	15	16	17	18	19																																																																																				
20	21	22	23	24	25	26																																																																																				
27	28	29	30	31																																																																																						

= Athletic Field, AR= Air rifle, Camp= Camp sites, FA=Field Archery, FH=Field house, LP=Large picnic, RP=Rifle/Pistol, SP=Small picnic, ST=Skeet/Trap, TA= Target Arche

# July 2015

## Arlington - Fairfax IWLA Calendar

Monday	Tuesday	Wednesday	Thursday	Friday	Saturday	Sunday																																																	
<div> <div>Jun 2015</div> <table> <tr><td>M</td><td>T</td><td>W</td><td>T</td><td>F</td><td>S</td><td>S</td></tr> <tr><td>1</td><td>2</td><td>3</td><td>4</td><td>5</td><td>6</td><td>7</td></tr> <tr><td>8</td><td>9</td><td>10</td><td>11</td><td>12</td><td>13</td><td>14</td></tr> <tr><td>15</td><td>16</td><td>17</td><td>18</td><td>19</td><td>20</td><td>21</td></tr> <tr><td>22</td><td>23</td><td>24</td><td>25</td><td>26</td><td>27</td><td>28</td></tr> <tr><td>29</td><td>30</td><td></td><td></td><td></td><td></td><td></td></tr> </table> </div>		M	T	W	T	F	S	S	1	2	3	4	5	6	7	8	9	10	11	12	13	14	15	16	17	18	19	20	21	22	23	24	25	26	27	28	29	30						<b>1</b> 3-7PM Robinson (AR)  Police and Fire Police and Fire	<b>2</b> 3-7PM Woodson (AR)  Police & Fire Games Trap (S&T)	<b>3</b> 5-7PM Junior Smallbore (RP)  5-9 PM Open Air Rifle (AR)	<b>4</b> 2-4PM AIM Shotgun (ST)  7-Noon Lake Braddock Air Rifle (AR)  Independence Day  Chapter Elections	<b>5</b> 8:00 AM Bullseye Match (RP)  11:00 AM CRA Meeting (FA)							
M	T	W	T	F	S	S																																																	
1	2	3	4	5	6	7																																																	
8	9	10	11	12	13	14																																																	
15	16	17	18	19	20	21																																																	
22	23	24	25	26	27	28																																																	
29	30																																																						
<b>6</b> 5-9PM Beginning Air Rifle (AR)  7-9PM Troop 1137 (FH)	<b>7</b> 8PM Advance Air Rifle (AR)  <b>7:30PM Board Meeting (FH)</b>	<b>8</b> 3-7PM Robinson (AR)	<b>9</b> 3-7PM Woodson (AR)  4PM Service Rifle (RP)	<b>10</b> 5-7PM Junior Smallbore (RP)  5-9 PM Open Air Rifle (AR)	<b>11</b> 2-4PM AIM Shotgun (ST)  7-Noon Lake Braddock Air Rifle (AR)  <b>Chapter Picnic</b>  Chapter Elections	<b>12</b>																																																	
<b>13</b> 5-9PM Beginning Air Rifle (AR)  7-9PM Troop 1137 (FH)	<b>14</b> 8PM Advance Air Rifle (AR)  6-11PM ABA Meeting (FA)	<b>15</b> 3-7PM Robinson (AR)	<b>16</b> 3-7PM Woodson (AR)	<b>17</b> 5-7PM Junior Smallbore (RP)  5-9 PM Open Air Rifle (AR)	<b>18</b> 2-4PM AIM Shotgun (ST)  7-Noon Lake Braddock Air Rifle (AR)	<b>19</b> 8AM-Noon Bull Run Muzzleloaders (RP)																																																	
IWLA Annual in Pierce SD																																																							
<b>20</b> 5-9PM Beginning Air Rifle (AR)  7-9PM Troop 1137 (FH)	<b>21</b> 8PM Advance Air Rifle (AR)  <b>7:30PM Membership Meeting (FH)</b>	<b>22</b> 3-7PM Robinson (AR)  <b>6-10PM Newsletter party (FH)</b>	<b>23</b> 3-7PM Woodson (AR)	<b>24</b> 5-7PM Junior Smallbore (RP)  5-9 PM Open Air Rifle (AR)	<b>25</b> 2-4PM AIM Shotgun (ST)  7-Noon Lake Braddock Air Rifle (AR)  8-6PM Metallic Reloading (FH)  8-6PM Weldell Thompson Match (AR)	<b>26</b>																																																	
<b>27</b> 5-9PM Beginning Air Rifle (AR)  6-10PM Suburban Whitetail Board (FA)  7-9PM Troop 1137 (FH)	<b>28</b> 8PM Advance Air Rifle (AR)	<b>29</b> 3-7PM Robinson (AR)	<b>30</b> 3-7PM Woodson (AR)	<b>31</b> 5-7PM Junior Smallbore (RP)  5-9 PM Open Air Rifle (AR)	<div> <div>Aug 2015</div> <table> <tr><td>M</td><td>T</td><td>W</td><td>T</td><td>F</td><td>S</td><td>S</td></tr> <tr><td></td><td></td><td></td><td></td><td></td><td>1</td><td>2</td></tr> <tr><td>3</td><td>4</td><td>5</td><td>6</td><td>7</td><td>8</td><td>9</td></tr> <tr><td>10</td><td>11</td><td>12</td><td>13</td><td>14</td><td>15</td><td>16</td></tr> <tr><td>17</td><td>18</td><td>19</td><td>20</td><td>21</td><td>22</td><td>23</td></tr> <tr><td>24</td><td>25</td><td>26</td><td>27</td><td>28</td><td>29</td><td>30</td></tr> <tr><td>31</td><td></td><td></td><td></td><td></td><td></td><td></td></tr> </table> </div>		M	T	W	T	F	S	S						1	2	3	4	5	6	7	8	9	10	11	12	13	14	15	16	17	18	19	20	21	22	23	24	25	26	27	28	29	30	31						
M	T	W	T	F	S	S																																																	
					1	2																																																	
3	4	5	6	7	8	9																																																	
10	11	12	13	14	15	16																																																	
17	18	19	20	21	22	23																																																	
24	25	26	27	28	29	30																																																	
31																																																							

= Athletic Field, AR= Air rifle, Camp= Camp sites, FA=Field Archery, FH=Field house, LP=Large picnic, RP=Rifle/Pistol, SP=Small picnic, ST=Skeet/Trap, TA= Target Arche

***Arlington-fairfax Chapter, Inc.***

**Izaak Walton League of America**

**Post Office Box 366**

**Centreville, VA 20122-0366**

**Return Service Requested**

NON-PROFIT ORG  
U.S. POSTAGE  
PAID  
CENTREVILLE, VA  
PERMIT # 6057



The Chapter Newsletter is your link to all chapter activities and information Keep it handy  
Now it is also available on our website

“[www.arlingtonfairfax-iwla.org](http://www.arlingtonfairfax-iwla.org)”

**CHECK IT OUT**

Chapter property address

**14708 Mount Olive Road**

**Centreville, VA 20122-0366**

We use re-cycled paper

*Past Sponsors  
and  
Patrons*

*National Rifle Association*

*Dominick Casciano*

*Suburban Electric*

*ManTech International*

*Fishnet Security*

*Dominion Power*

*Virginia Shooting Sports Association*

*Arlington/Fairfax IWLA*

*Sills Car Wash*

*Vienna Septic Services*

*National Shooting Sports Foundation*

**CRUSH'N CLAYS®**  
17th Annual  
to benefit  
St. Jude Children's Research Hospital  
**Saturday June 13, 2015**

*Join Us for the*

*17<sup>th</sup> Annual*  
**CRUSH'N CLAYS®**  
*to benefit*  
*St. Jude Children's Research  
Hospital*  
**Saturday June 13, 2015**

Hosted by the  
Virginia Shooting Sports Association  
and  
Arlington/Fairfax Chapter  
of the  
Izaak Walton League of America

17<sup>th</sup> Annual  
**Crush'n Clays®**

**Trapshooting**  
Individual Awards  
Lewis Class

**50 Target Event/Person**  
25 – 16 yard targets  
25 – handicap targets

**Annie Oakley Side Event**  
(ammunition for side event available for  
purchase at the range)

**Event T-Shirts to First 100 Entrants**

**Includes:**  
main event ammunition, loaner shotguns,  
targets, clinic, lunch and awards

**ENTRY LEVELS**

**Individual Participant**      \$60\*  
\$65 after May 20<sup>th</sup>

**Team Sponsorship**      \$230  
one 4 – person team

**Patron Sponsor**      \$750  
one 4 – person team  
Sponsor Sign at Clubhouse  
Appreciation Plaque

**Saturday, June 13, 2015**

**Check-In**  
Begins 8:00 AM

**Shooting Clinic**  
8:30 AM – 9:15 AM

16 Yard Event  
1<sup>st</sup> Flight – 9:30 AM  
2<sup>nd</sup> Flight – 10:30 AM  
3<sup>rd</sup> Flight – 11:30 AM

**Lunch**  
11:00 AM – 1:30 PM

**Handicap Event**  
1<sup>st</sup> Flight – 1:00 PM  
2<sup>nd</sup> Flight – 2:00 PM  
3<sup>rd</sup> Flight – 3:00 PM

**Annie Oakley Side Event**  
continuous throughout the day

**Directions**  
From I-495 (Capital Beltway)  
I-66 West  
Exit 53A Route 28 South  
Turn Right on Compton Road  
Turn Right on Mt. Olive Road  
Approximately 1/10<sup>th</sup> of a mile  
turn left into IWLA entrance

Arlington/Fairfax IWLA  
Chapter Field House  
(703) 631-4495  
Skeet and Trap Range  
(703) 631-4497

17<sup>th</sup> Annual  
**Crush'n Clays®**

OPTION	ENTRY	TOTAL
Patron	\$750	\$
Team	\$230	\$
Individual	\$60*	\$
After 5/20	\$65	\$
Total		

Preference	Flight Sequence
	9:30 AM & 1:00 PM
	10:30 AM & 2:00 PM
	11:30 AM & 3:00 PM

Flight sequence (state preference, 1<sup>st</sup>, 2<sup>nd</sup>, 3<sup>rd</sup>). You will be notified only if your first preference is not available. First cone, first served.

Example: Squad shooting 16 yards targets at 9:30 AM will shoot handicap targets at 1:00 PM and so forth.

Shooters who want to shoot together must send entries together.

**Register Today Space is Limited**

Name: \_\_\_\_\_  
Team/Co.Name: \_\_\_\_\_  
Address: \_\_\_\_\_  
State: \_\_\_\_\_ Zip: \_\_\_\_\_  
Phone: \_\_\_\_\_

☐ Check Enclosed

To pay by credit card go to:  
[www.myvssa.org/content/crushn-clays](http://www.myvssa.org/content/crushn-clays)

Mail to: St. Jude **Crush'n Clays®**  
Virginia Shooting Sports Association  
P.O. Box 1258, Orange, VA 22960-0714

**St. Jude Children's Research Hospital is  
non-sectarian and open to children  
without regard to race, religion creed or  
financial status.**

17<sup>th</sup> Annual

## **Crush'n Clays**

**Clay Target Charity Classic to benefit St. Jude Children's Research Hospital**

Saturday, June 13, 2015  
**Sponsorship Options**

<b>Gold</b> \$2500	<b>Silver</b> \$1250	<b>Patron</b> \$750
► Complete package for two – 4 person teams	► Complete package for one – 4 person teams	► One – 4 person teams

### **All Sponsors Also Receive**

- Sponsor Reception Friday evening
- Logo on banner displayed in a prominent location
- Presentation of an appreciation plaque
- Mention in all event media releases

### **Sponsorship Commitment**

<b>Option</b>	<b>Fee</b>	<b>Total</b>
Gold	\$2500	
Silver	\$1250	
Patron	\$750	
Total		

<input type="checkbox"/>	Check enclosed
<input type="checkbox"/>	Send Invoice

To pay by credit card go to:  
[www.myvssa.org/content/crushn-clays](http://www.myvssa.org/content/crushn-clays)

Company Name: \_\_\_\_\_

Contact Name: \_\_\_\_\_

Address: \_\_\_\_\_

City: \_\_\_\_\_

State: \_\_\_\_\_ Zip: \_\_\_\_\_

Phone: \_\_\_\_\_ Credit Card # \_\_\_\_\_ Exp. \_\_\_\_\_

Mail to: St Jude **Crush'n Clays** VSSA, P.O. Box 1258, Orange, VA 22960-0714

\*Hosted by the Virginia Shooting Sports Association and the Arlington – Fairfax Chapter of the IWLA.

**St. Jude Children's Research Hospital is non-sectarian and open to children without regard to race, religion, creed or financial status.**

17<sup>th</sup> Annual



---

**Clay Target Charity Classic to benefit St. Jude Children's Research Hospital**

Over the last 16 years the **Crush'n Clays**® event has raised over \$300,000 for the St. Jude Children's Research Hospital. Proceeds from the event help support the St. Jude Children's Research Hospital, the largest pediatric research facility in America established solely for the study of childhood cancer and other catastrophic diseases including pediatric AIDS and sickle cell anemia.

The hospital has a vast network of referring physicians, including over 99 in Virginia. Over 121 children from Virginia have been treated at the hospital, with countless others benefiting from its research.

The format for **Crush'n Clays**® is also a great way to introduce friends to the shooting sports while helping the kids of St. Jude's.

Please join us on June 14<sup>th</sup> and help this life-saving work continue and demonstrate that those in the shooting sports "care to make a difference."

## **What you should know . . .**

### **Event Location and Demographics**

Over 100 participants and 60 volunteers and spectators  
Median Family Income - \$107,000  
Median Age - 38

### **Media Coverage**

*NRA News - Radio and Internet*  
*NRA Club Connection*  
*Shotgun Sports Magazine*  
*Trap & Field Magazine*  
ALSAC/St. Jude news with a circulation of 15,000  
Virginia Shooting Sports Association publication *The Bullet*, circulation 3,800  
Arlington – Fairfax Chapter of the IWLA newsletter, circulation, 2,200  
Announcements and articles on numerous websites.

# Arlington—Fairfax Chapter IWLA

## Annual *Family* Picnic

**Saturday July 11, 2015**

**Gates open @ 10:00am, Lunch @ 1:00pm, Close ????**

Bring your family and friends to this great event. We are going to make this picnic the best ever. We will have.

- ♦ Pony Rides
- ♦ Moon Bounce
- ♦ Field Activities
- ♦ Hay Rides
- ♦ Fishing
- ♦ Horseshoes
- ♦ Fishing (we have some poles or bring your own)
- ♦ Sno Cone Machine (to cool off)
- ♦ **Live Country Band Starting at noon**

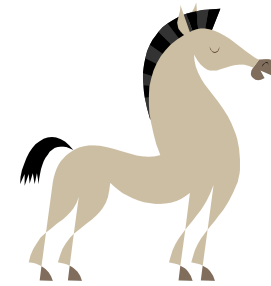
Come out early and enjoy **your** chapter, take a walk, do some fishing, Play Games or JUST RELAX

Purchase your tickets to a great Day

- ♦ Any of the ranges
- ♦ Field house Office
- ♦ Any Board member
- ♦ Tickets may be purchased on the day of the picnic

### Ticket Info

Members and family.....	\$8.00
Guest.....	\$10.00
Children 6 to 13.....	\$5.00
Under 6.....	FREE



**Food & Fun for ALL**

As for lunch, We will do the cooking for you, all you have to do is load your plate:

## Menu Of the Day



- ♦ **Pulled Pork BBQ**, (slow cooked for 5 hours)
- ♦ **Beef BBQ**
- ♦ **BBQ Chicken**
- ♦ **Hamburgers & Hot dogs**
- ♦ **Potato Salad / Cole Slaw**
- ♦ **Baked Beans**
- ♦ **Ice Cold Beverages**

For more information please call  
Bob Brino @ 703-368-4934.